

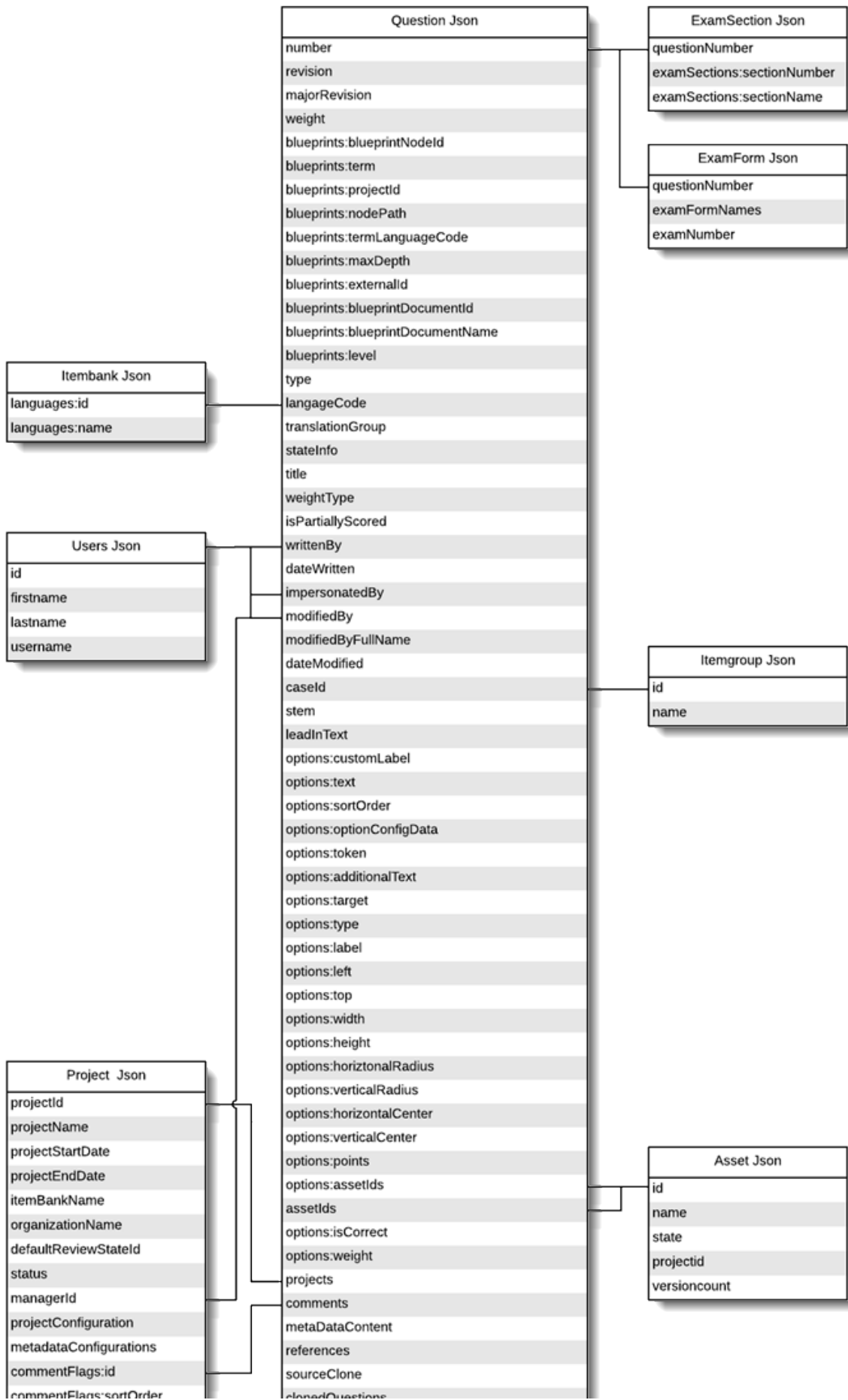
5.5.1.1 JSON Report Format

JSON (*JavaScript Object Notation*) is a lightweight data-interchange format. This human and machine friendly format can easily be written and interpreted. JSON is a text format and it is language independent.

The Custom report JSON export is a zip file that contains the following files:

- **Report.json**: All the information regarding the report including the *Item Bank*, *Project* and *Question ID*'s of the exported items. Details on the Custom Report data content selection and names of the output files generated for the report.
- **Asset.json**: Contains details of all the assets attached to the exported items.
- **ExamForm.json**: Lists all *Exam Forms* of the exported items.
- **ExamSection.json**: Lists all *Sections* that an item is part of.
- **Itembank.json**: Contains all defined *languages* for the itembank.
- **Itemgroup.json**: Lists all *Cases* that an item is part of.
- **Project.json**: Contains details of the *Project* for which export was done.
- **Question.json**: Contains details of the exported *items*.
- **Users.json**: Contains details for all *user ID*'s that are in the existing JSON files for the exported questions.
- **Lookup.json**: Contains project *reviewConfigurations*, *metadataConfigurations*, and *windowPosition* for questions. This file contains the key so users can identify how items are classified, the type of metadata, where the metadata can be assigned, and the placement of the window when it opens.

The diagram displayed below displays the relationship between the files listed above (except for Report.json, which is more like a manifest).



commentFlags:displayColor
commentFlags:name
commentFlags:isDisabled
projectPermissions
blueprintDocumentId

enemies
exhibits
parentQuestionNumber
translatedQuestions
shuffleResponse
calculatorType
revisionInformation
userTrackingInformation
isLatestRevision
minimumResponse
maximumResponse
isCaseExhibit
questionHistoryRecordCount
questionLockDetail
assetConfig

The following table provides the mapping between the Data elements and the JSON files (i.e., Type of Data, JSON attribute name, and the file name).

ExamDeveloper Custom Reports		JSON export	
Type of Data	Data Included	JSON element	Filename
Default	Question ID	number	Question
Default	Latest Revision	majorRevision	Question
Default	External ID	externalId	Question
Default		blueprintNodeId	Question
Default	Blueprint Name	term	Question
Default		projectId	Question
Default		nodePath	Question
Default		termLanguageCode	Question
Default		maxDepth	Question
Default		externalId	Question
Default		blueprintDocumentId	Question
Default		blueprintDocumentName	Question
Default		level	Question
Default		blueprintDocumentId	Project
Default	Item Type	type	Question
Default	Language	languageCode	Question
Default	Translation Group	translationGroup	Question
Default	State	state	Question
Default	Written By	writtenBy	Question
Default	Written On	dateWritten	Question
Default		languages:id	Itembank
Default		languages:name	Itembank

Content	Stem content	Stem ¹	Question
Content		leadInText ²	Question
Content		weight	Question
Content	Option label	options:customLabel ³	Question
Content	Option content	options:text ⁴	Question
Content		options:sortOrder ³	Question
Content		options:type ⁵	Question
Content		options:label ⁵	Question
Content		options:left ⁵	Question
Content		options:top ⁵	Question
Content		options:width ⁵	Question
Content		options:height ⁵	Question
Content		options:horizontalRadius ⁵	Question
Content		options:verticalRadius ⁵	Question
Content		options:horizontalCenter ⁵	Question
Content		options:verticalCenter ⁵	Question
Content		options:points ⁵	Question
Content	Option assets	options:assetIds ³	Question
Content		options:optionConfigData	Question
Content		dragAndDropDetails:tokens ⁶	Question
Content		dragAndDropDetails:targets ⁶	Question
Content		dragAndDropDetails:labels ⁶	Question
Content		options:token ⁷	Question
Content		options:additionalText ⁸	Question
Content		spreadSheetAssetId ⁹	Question
Content		Textboxes ¹⁰	Question
Content		Responses ¹⁰	Question
Content	Stem assets	assetIds	Question
Content		id	Asset
Content		name	Asset
Content		state	Asset
Content		projectId	Asset
Content		versioncount	Asset
Key	Correct options	options:isCorrect ³	Question
Key		options: weight	Question
Metadata	Comments	comments	Question

Metadata	Metadata	metaDataContent	Question
Metadata		commentFlags:id	Project
Metadata		commentFlags:sortOrder	Project
Metadata		commentFlags:displayColor	Project
Metadata		commentFlags:name	Project
Metadata		commentFlags:isDisabled	Project
Metadata		metadataConfigurations	Project
Metadata	References	references	Question
Metadata		id	ItemGroup
Associations	Case ID	caseld	Question
Associations	Case Name	name	ItemGroup
Associations	Cloned from	sourceClone	Question
Associations	Cloned to	clonedQuestions	Question
Associations	Enemies	enemies	Question
Associations	Exhibit Reference	exhibits	Question
Associations	Parent Question ID	parentQuestionNumber	Question
Associations		questionNumber	ExamForm
Associations	Exam forms	examFormNames	ExamForm
Associations		questionNumber	ExamSections
Associations	Sections	sectionNumber	ExamSections
Associations		sectionName	ExamSections

JSON Export Key

- 1 - All item types except R-Type
- 2 - R-Type only
- 3 - MCQ Single, MCQ Multiple, Pull-down list, Constructed Response, Point & Click, Fill In the Blank, R-Type, Matching item types
- 4 - MCQ Single, MCQ Multiple, Pull-down list, Constructed Response, Point & Click, Fill In the Blank, R-Type item types
- 5 - Point and click only
- 6 - Enhanced Matching only
- 7 - Matching only
- 8 - Constructed Response only
- 9 - Spreadsheet only
- 10 - Compound only